

# INDUSTRY



## **LENNOX EMEA**

*The partner for your projects*

**LENNOX EMEA** listens to your needs, then offers a set of systems and services that meet the demands of your business and help you optimise your investments.



[www.lennoxemea.com](http://www.lennoxemea.com)

**FRIGA-BOHN**

**HK**<sup>®</sup> **REFRIGERATION**

**LENNOX**<sup>®</sup>



With its **FRIGA-BOHN**, **HK REFRIGERATION** and **LENNOX** brands, our group is a major global player in the air-conditioning and refrigeration markets able to offer appropriate solutions for all your applications with a focus on consulting and proximity.

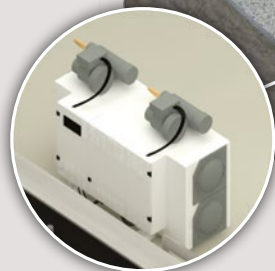
**LENNOX EMEA** - The partner for your projects!

### ENERGY PERFORMANCE

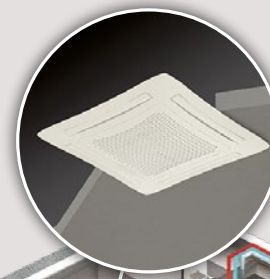
- **HIGH ENERGY EFFICIENCY**
  - High seasonal efficiency
  - Conformity to EcoDesign directives
  - Optimisation of seasonal efficiencies ( $\eta_{s,c}$  and  $\eta_{s,h}$ )
- **RESPONSIVENESS AND CONTROL ACCURACY**
  - Optimum precision of supply temperature (variable speed compressor)
  - Responsive and flexible control system
- **ENERGY SAVING**
  - Increased energy efficiency with energy recovery solutions and free cooling
  - System with variable primary flow (eDrive)

### FLEXIBILITY

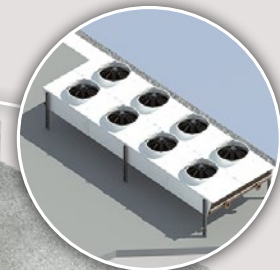
- **ADAPTATION TO VARIABLE LOADS**
  - Variable air flow technology
  - Self-adaptation between the required power and the air flow
- **NUMEROUS HEATING MODES**
  - (gas, electricity, water, thermodynamic, recovery)
- **WIDE OPERATING RANGE**
  - Low and high operating temperature



Process to be cooled



Chilled water cassette  
**ARMONIA**  
1,3 > 11 kW



Dry cooler  
**FC/FI NEOSTAR**  
20 > 1200 kW



Air cooled chiller /  
Heat pump  
**NEOSYS**  
200 > 1000 kW



Packaged air  
treatment unit  
**eNeRGy**  
0 > 180 kW



Air cooled chiller / Heat pump  
**eCOMFORT**  
20 > 190 kW

### RELIABILITY

- **ROBUSTNESS**
  - Integration of premium components
  - Certified qualification tests
  - 100% of units factory-tested
  - Manufactured according to ISO 9001 and 14001
- **SERVICE**
  - Easy maintenance thanks to the design of the products
  - Rapid response (extensive service network)
- **SAFE OPERATION**
  - Advanced control for managing alarms and emergency functions
  - Multi-circuit and multi-compressor system

### CONNECTIVITY

- **DATA MANAGEMENT**
  - Installation monitoring reports
- **REMOTE CONTROL**
  - Alarm and response management
  - Systems respond in real time
- **COMPARISON AND OPTIMIZATION OF MACHINES WITHIN THE SAME PARK**





# LENNOX EMEA

*A world of applications!*



Food processing



Storage and logistics



Process kitchens



Cafés / Restaurants



Convenience store



Food retail



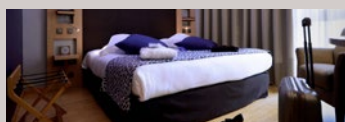
Non food retail



Shopping malls



Office buildings



Hotels



Industry



Data centers



Energy



[www.lennoxemea.com](http://www.lennoxemea.com)

To meet its commitments, LENNOX EMEA strives to provide the most accurate information. Nevertheless, the specifications, dimensions and values indicated may be changed without notice, without liability for LENNOX EMEA.